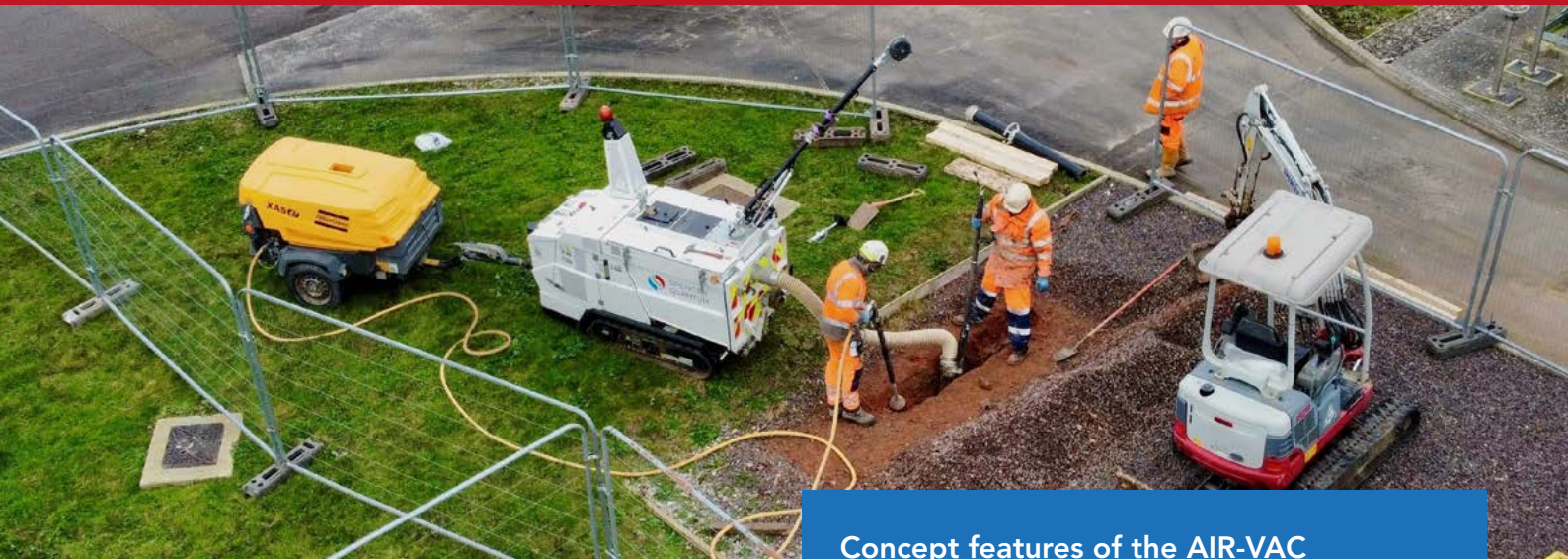


## Introducing **AIR-VAC** by Spencer Quantum Narrow access, low ground compaction vacuum excavation



Spencer Quantum has been providing specialist geotechnical, site and land services to local authorities and blue-chip clients in the highways, construction, environmental and utilities sectors for over 30 years. Spencer Quantum offers a wide range of in-house complementary solutions across several industries, providing clients with a bespoke and efficient service throughout the UK.

For vacuum excavation projects, Spencer Quantum uses an AIR-VAC by VAC-EX Ltd. The AIR-VAC track unit is a narrow access, low ground compaction, tracked vacuum excavation unit that is used to safely excavate trial inspection pits and expose live services without the need for mechanical excavation. Using the AIR-VAC track unit ensures strike-free excavation while prioritising operators' safety and wellbeing by completely eliminating the need for hand digging. This next-generation AIR-VAC track unit is capable of excavating most types of ground, both wet and dry.

The AIR-VAC is ideal for excavations and borehole drilling works in areas where potential buried services may be present. It enables areas of shallow excavation to be safely cleared of buried services and potential obstructions prior to carrying out further intrusive works, such as window sampling, boreholes and trial pits.

### Concept features of the AIR-VAC

**Narrow:** at only 1000 mm wide, the AIR-VAC track is ideal for narrow access investigation works when alternative means of excavation cannot provide access. This may be in domestic locations, down footpaths or in and around existing structures. Another benefit of it being a small and compact machine is that it can be lifted into locations where larger vacuum excavators are very unlikely to reach.

**Remote controlled:** a fully proportional remote control system offers better safety and productivity and enables the operation of the AIR-VAC from safer ground, with better vantage points and at reduced levels of vibration.

**Lightweight but robust:** at only 1750 kg, the AIR-VAC track has great weight distribution throughout. Pairing this with the low ground compaction tracked system that it's mounted on makes it the perfect machine for all site environments and conditions.

**Easy to mobilise:** secured on its purpose-built twin axle trailer, the complete unit weighs in at only 2250 kg, making it exceptionally easy to mobilise to site, utilising existing fleet vehicles.



## Safety features of the AIR-VAC

**E-Stop:** located centrally on the AIR VAC, it allows for fast and easy reach.

**Lighting:** amber warning, working and tracking warning LED lights are used to warn and inform operatives and others of the AIR-VAC's presence.

**Non-conductive excavation:** the excavation tooling is constructed from a mix of aluminium and polyethylene, providing a degree of protection from electric shock hazards.

**Zero hand-arm vibration syndrome:** the AIR-VAC is vibration tested with HAVI®.

## Technical specifications

<b>Length</b>	2600 mm / 4670 mm*
<b>Width</b>	1000 mm / 1810 mm*
<b>Height (top of exhaust)</b>	1950 mm / 2380 mm*
<b>Height (at minimum tipping)</b>	1800 mm**
<b>Height (at maximum tipping)</b>	2580 mm**
<b>Weight</b>	1750 kg / 2250 kg*
<b>Debris skip capacity</b>	0.2 m <sup>3</sup>
<b>Hose inlet Ø</b>	125 mm
<b>Vacuum</b>	Turbine
<b>Hydraulic power take-off A</b>	25 l/minute at 2175 psi
<b>Hydraulic power take-off B</b>	50 l/minute at 2175 psi

\*Loaded on a Challenger 50 trailer for ease of delivery

\*\*Including optional AV2-ARM-03

Machine weight can vary depending on specification

Under our policy of continuous improvement, we reserve the right to change specifications and design without prior notice. The illustrations do not necessarily show the standard version of the machine.

The AIR-VAC unit can be hired directly from Spencer Quantum and self-operated following demonstration; alternatively, it can be hired with a two-person crew. The unit also comes with its own road-towable, fuel-efficient, 125 cfm air compressor, which hitches onto the rear of the AIR-VAC unit once on-site.

For more information on the AIR-VAC track unit, please visit <https://www.vac-ex.com/equipment/air-vac-track/>

Please contact [gethin@spencerquantum.co.uk](mailto:gethin@spencerquantum.co.uk) with any enquiries.